



**1**

**THE PATHOGEN**

How well any pathogen is able to thrive depends on three factors



**2**

**THE RESERVOIR  
(WHERE IT COMES FROM)**

Common reservoirs include humans, animals, insects and the environment



**3**

**THE PORTAL OF EXIT**

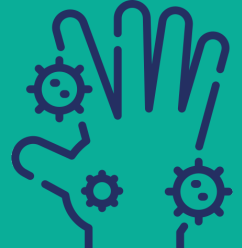
The portal of exit is any route which enables a pathogen to leave the reservoir or host



**4**

**THE MODE  
OF TRANSMISSION**

The main way that an infection can be transmitted either directly or indirectly



**5**

**THE PORTAL OF ENTRY**

The portal of entry is any route which enables a pathogen to access the reservoir or host



**6**

**THE SUSCEPTIBLE HOST**

Susceptibility of any host depends on a variety of factors i.e. age and current health



Read our full article and find the solution at [inivos.com](https://inivos.com)